



Thimble And Thread Quilt Guild of Greater St. Louis

March 2022 Newsletter
Volume 46, Issue 3

News From the President

HAPPY MARDI GRAS AND

HAPPY ST. PATRICK'S DAY

The next meeting of Thimble and Thread quilt Guild will be on Friday, March 11, 2022. Doors open at 6:30pm, meeting starts at 7:00pm at Shrewsbury City Center, 5200 Shrewsbury, Shrewsbury, MO. 63119. Our Program will be presented on "ZOOM" at the meeting with MJ Kinman on "Gems and Joy".

We enjoyed a lively program in February from Hallye Bone on "Quilting in Hard Times". President of "Stitch in Time" quilt guild from Warrenton, Mo came to hear Hallye and Susie of "Susie Q Quilting" from Wentzville, shared a new "Block of the Month" quilt at Show N' Tell and had a hand out for discount on purchase in Feb.

Guild meetings are open to non-members free for first visit and \$3.00 per visit thereafter unless programs given by National Speaker, then \$5.00 fee is charged (except for the upcoming for the upcoming Ricky Tims presentation). Membership dues are \$30.00 a year.

ITEMS TO BRING TO MEETING

- * Masks are recommended
- * Name tag - make personal hand-made tag

- * \$\$ for Fabric Raffle
- * \$\$ for Retreat
- * Items for Free Table, take back anything not taken
- * Show and Tell items
- * Charity Quilts
- * Only water bottles with caps are allowed

NOMINATING COMMITTEE

Ruth Grimes, Board member and Kate Lottes, guild member volunteered to make calls to paid members, looking to fill officer openings for next year for Vice-President, Secretary and Treasurer. 2 members can fill each position, making work a little lighter. Please step up and become active in your guild.

VOTE BY MEMBERSHIP IN MARCH

The "Suspension of By-Laws (Article VI, meetings, Section B)" was brought to my attention by Art Kruse and Kathy Sherrick.

"Per our By-Laws, at the September meeting is when the annual budget is presented for membership approval and all committees are to report"

Our September 2022 Guild Meeting is scheduled to have National

Speaker, Ricky Tims for the evening and will be open to outside visitors and we will probably not have our usual business meeting to deal with at that time. We will have a motion and vote by the membership to move the annual meeting to our October, 14, 2022 meeting.

Two years ago, March 15, 2020, our lives shut down for COVID, I received emails from Webster Groves Presbyterian Church a day after our guild meeting that they were closing until further notice for in-person gatherings. The guild kept in touch with our monthly newsletter, eventually Adele Niblack with help from Julie Tucker started up our "ZOOM" meetings, and we were able to see each other. As more openings started to happen, WGPC was not open yet, Adele researched and found our current location Shrewsbury City Center and we started in person meetings last September 2021. We continue to apply social distancing in seating and I appreciate all you continue to wear a mask. I do not want to be the "vaccine or masks" police, and we all know that this too will pass.

Thank you for supporting the guild and I hope all of you will continue to be safe.

Denise Poepsel

President

OUR MARCH PROGRAM

In March, national speaker, MJ Kinman, will present Gems & Joy "Gems and Joy" via Zoom at our Shrewsbury location. MJ likes to say she makes the biggest diamonds in the world. But instead of using the hardest substances in the world, she uses the softest – fabric. She describes the techniques she uses to create her giant gem portraits as traditional piecing using freezer paper for templates.

MJ's work has been exhibited in national competitions, galleries, and museums, including the National Quilt Museum and the International Quilt Museum. Her work is included in private and public collections, including Maker's Mark Distillery and the National Quilt Museum.

Her gems have been featured in American Quilter, Quiltfolk, Quilting Arts Magazine, McCall's Quilting, France Patchwork and others. You may also have seen MJ on Quilting Arts TV and The Quilt Show.com with Alex Anderson and Ricky Tims over the past few years.

MJ's first pattern series, the Birthstone series, is a collection of 12 blocks representing the traditional birthstone gems. Her Diamond Divas series features large diamond quilt patterns. Her first book, Gemstone Quilts, was released by C&T Publishing in 2020.

MJ is a BERNINA Brand Ambassador and is always delighted to share her techniques with new and experienced quilters alike. She presents her classes and trunk shows both in person and online.

For more information, visit MJ's website and social media sites:

Website: www.MJKinman.com

Facebook: www.Facebook.com/mjkinmantextileartist

Instagram: www.Instagram.com/mjkinman_textileartist

April finds us welcoming Jane Baumstark. Jane loves surface design and she will be showing us how easy it is to paint fabric and include it in traditional quilts.

In May, Candy Grisham will enlighten us with "What is Modern Quilting?"

Our postponed member demonstrations are tentatively scheduled for June. Included are fabric bowls, machine ruler work and machine applique.

In September, Ricky Tims is coming to St Louis!

He will present "Reach for the Un-reachable, Believe in the Impossible"

Ricky Tims is known for his whimsical storytelling, motivational anecdotes, and an inspirational body of work which spans a lifetime of creative endeavors that include music, photography, writing, and quilting. Through his own experiences Ricky will deliver an uplifting and encouraging multi-media presentation that will highlight the benefits of setting goals and ignite the flames of purpose and determination for your own creative journey.

We will be meeting in the Shrewsbury City Center Multi-Purpose room for this event (our December meeting was held there).

Guild members may attend at no cost. Visitors will be charged at least \$10.00, \$5.00 of which will cover Ricky's fees.

This is a guild fund-raiser and since there is limited seating, we will be requesting that guild members re-

serve a ticket ahead of time. We will be opening up reservations to the general public in June. Details of how to reserve a spot will be posted. These are NOT assigned seats.

This should be a spectacular presentation! Hope to see you all there.

Co-Vice-Presidents/Programs:

Cindy Bell Neville and Adele Niblack

**** IN CASE YOU MISSED HALLYE BONE AT OUR FEBRUARY MEETING**

Vice-President Adele Niblack introduced our speaker, Hallye Bone, a quilt historian who also restores old quilts spoke on the topic of "Quilting During Hard Times." In the 1920s and 1930s, there was a popular saying, "Use it up, wear it out, make it do, or do without."

Some unusual "batting" in their quilts included tobacco leaves, newspapers, and old quilts. Any fabric they could find was used: linen napkins, feed sacks and old fabric. New fabrics that were popular included polka dots because this would cheer them up. Many quilts had lots of scraps--they traded with other quilters to get a wider assortment.

Solid fabrics were cheaper than prints. The New York Times has reported that quilting, crocheting, and knitting lower blood pressure and your heart rate because of the repetitiveness of the stitches.

The ways that we can continue quilting frugally are: recycle; shop your own stash; overdye fabrics (tan Rit dye); use solids (cheaper); thrift shops; men's ties; flannel shirts; garage sales; piece your own batting; piece your own binding; rubber stamp fabric; and be resourceful.

One book Hallye highly recommended was Little Heathens: Hard Times and High Spirits on an Iowa

Farm During the Great Depression by Mildred Kalish.

Notes from Jean Ameduri

THIMBLE & THREAD 2022 RETREAT

Retreat dates for 2022 are October 28, 29, and 30 at The Pallottine Retreat Center.

The cost per person for 2022 retreat will be \$330.00 per person. Since last year we did not meet the minimum number of participants (25) as per our contract we are assessing this year's cost on having 20 participants. If we have more than 20 people sign up for the retreat, each person will be entitled to a refund based on the actual number of participants. The minimum number of participants is determined by The Pallottine Retreat Center to ensure they have adequate staff and are able to cover their costs.

If you've not attended one of our retreats at Pallottine, you are missing out on a FUN time! Where else can you go for 2-1/2 days to sew as much as you like and not have to worry about fixing meals, making your bed, cleaning up, etc., etc., etc? and it's a great way to become better acquainted with some of your fellow quilters.

Everything we need is under one roof – sewing space, dining, and sleeping. If the weather is decent, there are areas outside to walk both on the grounds as well as a very old cemetery which in itself is an interesting place to visit.

The retreat starts at 9 am on Friday, October 28th and will end after lunch on Sunday, October 30th. Lunch and dinner are included on Friday; breakfast, lunch, and dinner on Saturday; and breakfast and lunch on Sunday. We have to be out of the premises by 2 pm on Sunday, October 30th.

Reserve your place now! You may pay either the whole amount of \$330.00 or make a down-payment of 50% (\$165.00) with the balance due no later than our September meeting. Checks are to be made out to Thimble and Thread Quilt Guild.

We will be opening this retreat up to other guilds in the area in late Spring.

If you have any questions, please contact Susan Sanders (bpandq@aol.com (mailto:bpandq@aol.com)) and please reference the retreat in the subject line.

In the meantime, keep on quilting!

Susan Sanders

Retreat Coordinator

MEMBERSHIP UPDATE

February 2022

We had a great attendance for Hallye Bone's interesting presentation! There were 36 members and 7 guests present. One guest joined. We welcome Susan Herzberg to our group! Her information is now on our membership roster.

Thanks go out to Hallye Bone for several donations for our membership attendance prizes, as well as several others who have donated items. They are much appreciated! Please remember me as you come across items you have that would make good attendance prizes. Perhaps you have some books you are finished with, patterns you decided not to do, quilting tools that are extras, or precious little gifts that you have made that you are willing to donate. While I now have a good supply of wonderful prizes, the more I have the more numbers I feel we can draw at each meeting! In fact, we drew 9 numbers at the February meeting! If by chance you are one of the last numbers drawn and the prize is not your cup of tea, I would not be offended if it shows up on the free table the next month! LOL In fact, you may pick up a book, look at it for a month, and then decide to bring it back to the free table. No problem!

Happy quilting, and see you at the March meeting!

La Donna Patterson

Ricky Tims Remembers Thimble and Thread

Ricky Tims mentioned Thimble and Thread Quilt Guild and showed some of his earliest quilts in his video blog "Today on the Mountain" on Feb. 2. Take a look at the YouTube video at <https://www.youtube.com/watch?v=M9O5cWCyDck> (<https://www.youtube.com/watch?v=M9O5cWCyDck>).

Are You Missing a Puzzle Piece?

Did you attend the Fall 2021 Quilt Retreat?

On the free table, to be given away, was a jigsaw puzzle of the Titanic, in a large Zip Lock bag.

I have a piece that is missing from that puzzle, and rather than toss it in the trash, I thought I'd try to

track down the person who picked up the puzzle. If you have any info about this, let me know!

Lillian Seese

Lillian.Seese@yahoo.com

Thimble and Thread Quilt Guild Meeting Minutes

February 11, 2022

The meeting was opened at 7 p.m. by President Denise Poepsel. Vice-President Adele Niblack introduced our speaker, Hallye Bone, a quilt historian who also restores old quilts spoke on the topic of "Quilting During Hard Times." In the 1920s and 1930s, there was a popular saying, "Use it up, wear it out, make it do, or do without." Some unusual "batting" in their quilts included tobacco leaves, newspapers, and old quilts. Any fabric they could find was used: linen napkins, feed sacks and old fabric. New fabrics that were popular included polka dots because this would cheer them up. Many quilts had lots of scraps--they traded with other quilters to get a wider assortment. Solid fabrics were cheaper than prints. The New York Times has reported that quilting, crocheting, and knitting lower blood pressure and your heart rate because of the repetitiveness of the stitches. The ways that we can continue quilting frugally are: recycle; shop your own stash; overdye fabrics (tan Rit dye); use solids (cheaper); thrift shops; men's ties; flannel shirts; garage sales; piece your own batting; piece your own binding; rubber stamp fabric; and be resourceful. One book Hallye highly recommended was Little Heathens: Hard Times and High Spirits on an Iowa Farm During the Great Depression by Mildred Kalish.

LaDonna Patterson, Membership, reported 34 members and 6 guests were present. Anne Hennig, Fabric Raffle, had 3 exotic African fabrics. Susan Sanders, Retreat, reported the fall retreat will be Oct. 28-30 and the cost will be \$330. Jeanette Oesterly reported for the Charity Quilts: 300 quilts to Sweet Babies, 50+ to Home Sweet Home, and she will even bind baby charity quilts, if needed.

President Denise Poepsel reported that the Nominating Committee is being represented by board member Ruth Grimes. She needs 2 more volunteers. Contact Denise if interested in joining. Adele Niblack, Vice-President, reported that the upcoming Global Quilt Connection (Zoom multiple 15-minute presentations by quilting teachers around the world) will be held March 3-5. They will have 3 presentations in 2022. Last month she informed us it would cost \$100 to get all of them, but actu-

ally the cost is \$100 for each of the 3 presentations. Jeanette Oesterly made a motion to approve the \$100 for the March presentation. Cindy Clifton seconded the motion. The motion passed.

The Ad Hoc Committee for Jean Ameduri's quilt studio proposal was held February 4. The topics covered were: insurance and personal liability; manpower; and general subjects on the 12-page proposal. After all of the discussion, Jean withdrew her proposal for 2 reasons: covid and possible lack of manpower. She was asked to bring back the proposal in 1-3 years, when the pandemic has subsided.

A motion was made by Susan Sanders and seconded by Lillian Seese to approve the board minutes for January. Motion passed. New members were requested to make name tags.

Adele Niblack, Vice-President, announced that M.J. Kinman, known for her "Gems" quilts will present the program in March on how to design gems with fabric to enhance their sparkle and value (Zoom here).

Cindy Neville, Vice-President, announced that Ricky Tims, honorary member of Thimble and Thread, will be presenting "Reach for the Unreachable, Believe the Impossible" at our September 9 guild meeting. This will be held in the Shrewsbury City Center where we currently meet. Guild members will get in free, but you must reserve a spot (details to be given later). Non-guild members will be charged at least \$10. This will be announced to the general public in June. The meeting ended at 8:30 p.m.

Respectfully Submitted,

Jean Ameduri

** TREASURER'S REPORT— DECEMBER 2021

Ruth Grimes, Treasurer

| | | |
|----------------------|------------------|----------------------------|
| Checking Account | Starting Balance | \$6,967.25 |
| Checks | \$1,650.00 | Pallottine Retreat Deposit |
| Deposits | +0.23 | Interest |
| Ending Balance | \$5,317.48 | |
| Savings Account | Balance | \$31.47 |
| Money Market Account | Balance | \$4,977.37 |
| 6 month CD | Balance | \$6,174.18 |
| 1 year CD | Balance | \$6,405.57 |

CHARITY QUILTS

Since the beginning of 2022, the guild has donated 49 quilts, 11 tote bags and 7 afghans to Sweet Babies.

The guild has donated 20 quilts to Home Sweet Home this calendar year.

If you need labels for your charity quilts please contact me.

Jeanette Oesterly

314-413-7875

Guild Officers For September 2021 - July 2022

| | |
|-------------------|------------------------------------|
| President | Denise Poepsel |
| Co-Vice President | Adele Niblack & Cindy Bell Neville |
| Treasurer | Ruth Grimes |
| Secretary | Jean Ameduri |

| News is Due 1 Wk. After Each Monthly Meeting | Publish Newsletter 2 Wks. Before Meeting | Meeting Dates |
|---|---|---------------|
| 3/18/2022 | 3/25/2022 | 4/8/2022 |
| 4/15/2022 | 4/29/2022 | 5/13/2022 |
| 5/20/2022 | 5/27/2022 | 6/10/2022 |
| 6/17/2022 | 6/24/2022 | 7/8/2022 |
| 7/15/2022 | 7/29/2022 | 8/12/2022 |
| 8/19/2022 | 8/26/2022 | 9/9/2022 |
| 9/16/2022 | 9/30/2022 | 10/14/2022 |
| 10/21/2022 | 10/28/2022 | 11/11/2022 |
| 11/18/2022 | 11/23/2022 | 12/9/2022 |

2021-2022 Standing Committee Chairs

| | |
|-----------------|---------------------------------|
| Membership | LaDonna Patterson & Gay Stewart |
| Newsletter | Kathy Sherrick & Patty Thompson |
| Workshop | Cynthia Clifton |
| Parliamentarian | Art Kruse |
| Outreach | Sally Koczan & Jessica Koczan |
| Retreat | Susan Sanders |
| Historian | Jean Ameduri |
| Fabric Raffle | Anne Hennig |



Carol Harris_daschaund.jpg



Delores Keaton 1.jpg



Delores Keaton 2.jpg



Delores Keaton 3.jpg



Leigh Anne Huckaby.jpg



Russell Horne.jpg



Shelbe Bullock 1.jpg



Shelbe Bullock 2.jpg



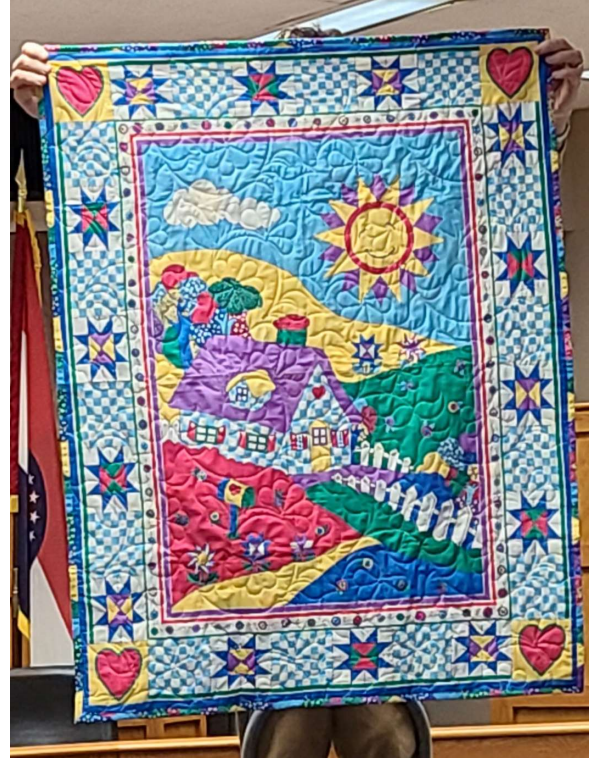
Steve Zekel.jpg



unknown 1.jpg



unknown 2..jpg



Unknown 3.jpg



unknown 4.jpg